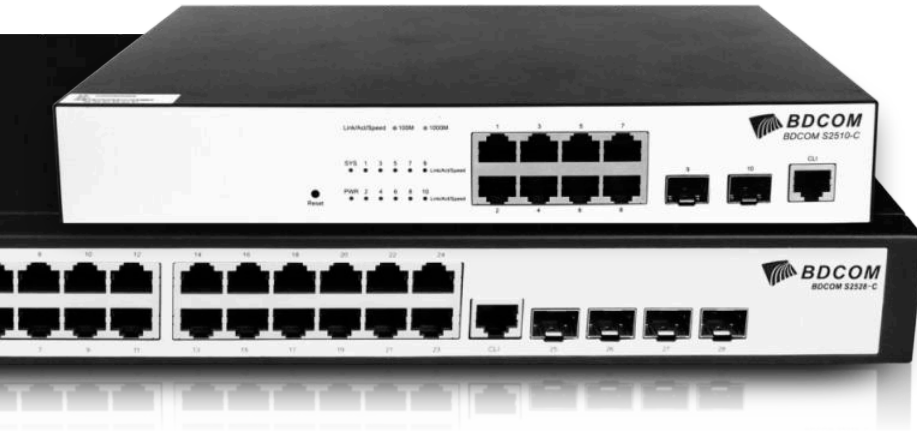


# S2500-C SERIES



Supports Maximum 24  
GE TX Ports and 4 GE  
SFP Uplink Ports



Advanced Hardware  
Architecture and  
Industry-leading Port  
Density



Carrier-Level High  
Reliability  
Layer-3 Routing  
Functions



Varied Service  
Characteristics  
Versatile IPv6  
Solution Complete  
Security Mechanism

## Product Overview

BDCOM S2500-C Series is a new-generation intelligent gigabit access switch designed for carrier's IP MAN and enterprise networks. Based on the new-generation high-performance hardware and BDROS platform, it supports functions such as ACL, QinQ and QoS. Its simple management mode and flexible installation can meet the requirement of any complicated scenarios.

BDCOM S2500-C Series has 2 models: S2510-C and S2528-C.

## Product Characteristics

### Carrier-Level Ethernet Access Switch

S2500-C Series supports the carrier-level Ethernet-ring protection protocol with less than 50ms recovery time, STP/RSTP/MSTP, backup uplink ports, and LACP link aggregation to cater to the requirements of high reliability of carriers;

S2500-C Series has powerful ACL functions to access and control L2-L7 data based on physical port, providing carriers flexible and various policy control methods;

S2500-C Series supports In-Service Software Upgrade (ISSU) to ensure the unremitting data forwarding during system upgrade;

S2500-C Series supports various L2 multicast functions such as IGMP-snooping, fast-leave and MVR to fully meet the operation requirements of carrier's IPTV.



# Product Characteristics

## Comprehensive IPv6 Solutions

S2500-C Series supports the IPv6 protocol suite, IPv6 neighbor discovery, ICMPv6 and Path MTU discovery.

S2500-C Series supports Ping, Traceroute, Telnet, SSH and ACL on the basis of IPv6, meeting IPv6 networks' equipment management requirements and service control requirements;

## Enhanced QoS

S2500-C Series supports priority retagging and complicated flow classification based on VLAN, MAC, source address, destination address, IP or priority, better streamlining carrier's services.

S2500-C Series provides flexible bandwidth control policies, supporting port-/flow-based flow limit, ensuring the line speed forwarding of each port.

S2500-C Series supports multiple queue schedule algorithms such as SP, WRR and "SP + WRR".

## Security+

Equipment-level security: The advanced hardware infrastructure design realizes the level-based packet schedule and packet protection, prevents DoS-/TCP-related SYN Flood, UDP Flood, Broadcast Storm or large traffic attacks, and supports level-based command line protection, endowing different levels of users with different management permissions.

Perfect security authentication mechanisms: IEEE 802.1x, Radius and BDTacacs+.

S2500-C Series supports storm/multicast/unicast limit, ensuring the normal running of equipment in harsh network conditions.

S2500-C Series supports perfect ring detection mechanism, ensuring the long-term stable running of network.

S2500-C Series supports port isolation within the same VLAN, DHCP-Snooping, and IP + MAC + Port binding.

## Easy Management and Maintenance

S2500-C Series supports many management modes such as the CLI, Telnet, SSH, SSL and SNMP.

S2500-C Series supports the WEB management mode, which is easy and efficient for installing and debugging the device.

S2500-C Series supports FTP,TFTP and SFTP.

S2500-C Series supports ISSU (In-Service Software Upgrade).

S2500-C Series supports SNMP and BDCOM NMS smart network management platform. The combination realizes automatic equipment discovery, network topology management, equipment configuration management, performance data statistics and analysis and trouble management.

S2500-C Series supports Zero Touch Provisioning(ZTP) function to minimize manual operator intervention and helps reduce customers' initial deployment costs.

# Model lists

## S2510-C



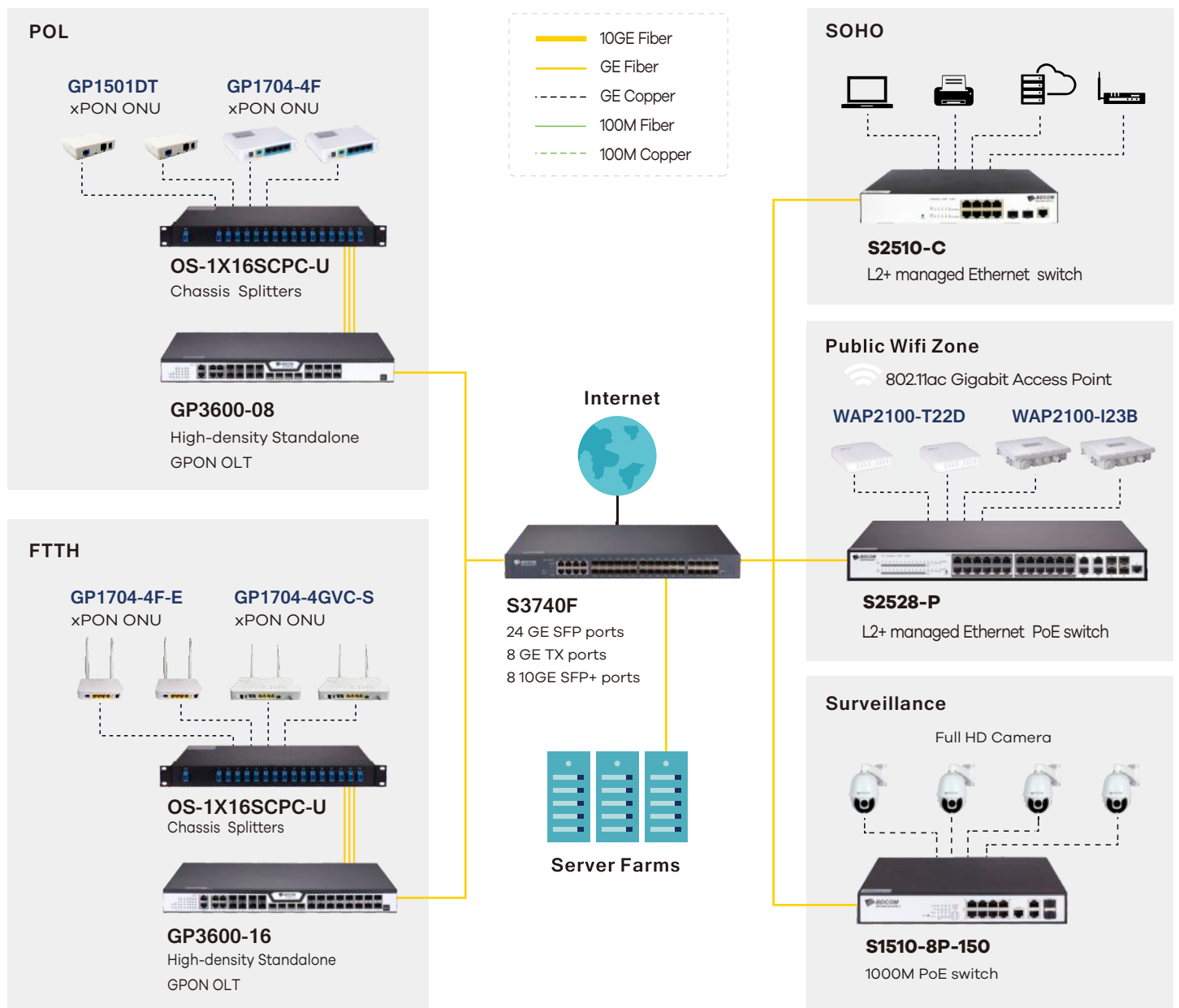
- 8 GE TX port
- 2 100/1000M SFP ports

## S2528-C



- 24 GE TX ports,
- 4 100/1000M SFP ports

# Application Diagram



# Product Specifications

| Item                              | S2510-C                                 | S2528-C                                  |            |
|-----------------------------------|---|--|------------|
| Interface                         | 8 GE TX ports,<br>2 100/1000M SFP ports | 24 GE TX ports,<br>4 100/1000M SFP ports |            |
| Console                           | 1 RJ45 port, 1 RST button               | 1 RJ45 port, 1 RST button                |            |
| Backplane                         | 20 Gbps                                 | 56 Gbps                                  |            |
| Forwarding rate                   | 15 Mpps                                 | 42 Mpps                                  |            |
| Chassis                           | Dimensions<br>(WxDxH)(mm)               | 280x180x44                               | 440x210x44 |
|                                   | Weight(KG)(empty)                       | 1.55                                     | 2          |
| Package                           | Dimensions<br>(WxDxH)(mm)               | 346x289x92                               | 555x295x88 |
|                                   | Weight(KG)                              | 2.55                                     | 3          |
| Power consumption                 | no-load                                 | <3W                                      | <7W        |
|                                   | full-load                               | 10W                                      | 20W        |
| Power supply                      | AC: 100V-240V,<br>50Hz±10%              | 15W                                      | 25W        |
| Total output BTU (1000BTU/H=293W) |   | 51.19                                    | 85.32      |
| Fan number                        |   | no                                       |            |
| Noise@25°C(dBA)                   |   | 0  |            |
| MTBF(H)                           |   | >50,000                                  |            |
| Forwarding mode                   |   | Store-forward                            |            |
| Flash (MB)                        |   | 16                                       |            |
| DRAM (MB)                         |   | 128                                      |            |
| MAC                               |   | 8K                                       |            |
| Buffer size(MB)                   |   | 4.1                                      |            |
| Jumbo frame                       |   | 9K                                       |            |
| Total SVI                         |   | 10                                       |            |

## Features

### VLAN

- 4K Active VLAN
- QinQ & Selective QinQ
- GVRP, Private VLAN
- Voice VLAN

### Spanning Tree

- 802.1D (STP)
- 802.1W (RSTP) and 802.1S (MSTP)
- BPDU guard, root guard and loopback guard

### Multicast

- IGMP v1/2/3
- IGMP Snooping
- IGMP Fast Leave
- IGMP Filter
- MVR

### IP

- Static route
- RIP, OSPF
- 512 routing table
- IP v4/v6 dual stack
- DHCP Server/Client/Relay

### QoS

- CAR, HQoS, MAC/IP/TCP/UDP/VLAN/COS/DSCP/TOS based
- QoS, 802.1P/DSCP priority re-labeling, SP, WRR, and "SP+WRR",
- Tail-Drop, WRED, flow monitoring and traffic shaping

### Security

- Port isolation, Port security, and "IP+MAC+port" binding, MAC sticky, DHCP Snooping and option 82, DAI & IP source guard, PPPoE+,
- IEEE 802.1x, Radius and BDTacacs+
- L2/L3/L4 ACL flow identification and filtration Anti-attack from DDoS, TCP's SYN Flood, UDP Flood, etc.
- Broadcast/multicast/unknown unicast storm-control
- MD5, SHA-256, RSA-1024, AES256, etc.

### Reliability

- Static/LACP link aggregation, Interface backup
- EAPS and ERPS
- ISSU

### Management

- Console, Telnet, SSH v1/2, HTTP, HTTPS, SNMP v1/v2/v3, RMON
- TFTP, FTP, SFTP
- NTP
- ZTP (Zero Touch Provisioning)
- SPAN, RSPAN

### Accessories

- Power cord, rackmount kits, console cable, anti-slipping pad

### Environment

- Operating temperature/humidity: 0°C -50°C, 10%-90% non-condensing
- Storage temperature/humidity: -20°C -70°C, 5%-95% non-condensing

### Certification

- CE, FCC, ROHS

BDCOM S2500-C Series

# Ordering Information

| Item                         | Description  |
|------------------------------|--|
| <b>S2500-C Series switch</b> |  |
| S2510-C                      | Ethernet switch with 8 GE TX ports and 2 GE SFP ports (1 console port, 8 GE TX ports, 2 100/1000M SFP ports, 1 standard AC220V power supply, fanless, 1U, desktop installation)                |
| S2528-C                      | Ethernet switch with 24 GE TX ports and 4 GE SFP ports (1 console port, 24 GE TX ports, 4 100/1000M SFP ports, 1 standard AC220V power supply, fanless, 1U, 19-inch rack-mounted installation) |
| <b>Optical Modules</b>       |  |
| <b>100M Optical Modules</b>  |  |
| FSFP-SX-1310                 | 100M SFP multi-mode (2Km, 1310nm, LC, DDM)   |
| FSFP-LX-15                   | 100M SFP single-mode (15Km, 1310nm, LC, DDM)   |
| FSFP-LX-40                   | 100M SFP single-mode (40Km, 1310nm, LC, DDM)   |
| FSFP-ZX-80                   | 100M SFP single-mode (80Km, 1550nm, LC, DDM)   |
| FSFP-LX-SM1310-20-BIDI       | 100M SFP single-mode, single fiber (20Km, TX1310/RX1550, LC, DDM)  |
| FSFP-LX-SM1550-20-BIDI       | 100M SFP single-mode, single fiber (20Km, TX1550/RX1310, LC, DDM)  |
| FSFP-LX-SM1310-40-BIDI       | 100M SFP single-mode, single fiber (40Km, TX1310/RX1550, LC, DDM)  |
| FSFP-LX-SM1550-40-BIDI       | 100M SFP single-mode, single fiber (40Km, TX1550/RX1310, LC, DDM)  |
| FSFP-LX-SM1310-80-BIDI       | 100M SFP single-mode, single fiber (80Km, TX1310/RX1550, LC, DDM)  |
| FSFP-LX-SM1550-80-BIDI       | 100M SFP single-mode, single fiber (80Km, TX1550/RX1310, LC, DDM)  |
| <b>GE Optical Modules</b>    |  |
| GSFP-TX-B                    | GE SFP-to-RJ45 module  |
| GSFP-SX-D                    | GE SFP multi-mode(500m,850nm,LC,DDM)   |
| GSFP-LX-10-D                 | GE SFP single-mode(10Km,1310nm,LC,DDM)   |
| GSFP-LX-20-D                 | GE SFP single-mode (40Km, 1310nm, LC, DDM)   |
| GSFP-LX-40-D                 | GE SFP single-mode (40Km, 1310nm, LC, DDM)   |
| GSFP-ZX-80-D                 | GE SFP single-mode (80Km, 1550nm, LC, DDM)   |
| GSFP-ZX-120-D                | GE SFP single-mode (120Km, 1550nm, LC, DDM)  |
| GSFP-LX-SM1310-10-BIDI       | GE SFP single-mode, single fiber (10Km, TX1310/RX1550, LC, DDM)  |
| GSFP-LX-SM1550-10-BIDI       | GE SFP single-mode, single fiber (10Km, TX1550/RX1310, LC, DDM)  |
| GSFP-LX-SM1310-20-BIDI       | GE SFP single-mode, single fiber (20Km, TX1310/RX1550, LC, DDM)  |
| GSFP-LX-SM1550-20-BIDI       | GE SFP single-mode, single fiber (20Km, TX1550/RX1310, LC, DDM)  |
| GSFP-LX-SM1310-40-BIDI       | GE SFP single-mode, single fiber (40Km, TX1310/RX1550, LC, DDM)  |
| GSFP-LX-SM1550-40-BIDI       | GE SFP single-mode, single fiber (40Km, TX1550/RX1310, LC, DDM)  |
| GSFP-LX-SM1490-80-BIDI       | GE SFP single-mode, single fiber (80Km, TX1490/RX1550, LC, DDM)  |
| GSFP-LX-SM1550-80-BIDI       | GE SFP single-mode, single fiber (80Km, TX1550/RX1490, LC, DDM)  |
| GSFP-LX-SM1490-120           | GE SFP single-mode, single fiber (120Km, TX1490/RX1550, LC, DDM)   |
| GSFP-LX-SM1550-120           | GE SFP single-mode, single fiber (120Km, TX1550/RX1490, LC, DDM)   |

Copyright © Shanghai Baud Data Communication Co., Ltd. 2019. All Rights Reserved.

This document is BDCOM Public Information. BDCOM reserves the right to alter, update and otherwise change the information contained in the document from time to time.  
www.bdcom.cn

